

FACTSHEET

The National Platform for Electric Mobility

The National Platform for Electric Mobility (PNME) is a joint effort of important agents from the Brazilian government, the industry, the academia and the civil society, adding more than 30 institutions to bring about long-term goals, taking technological development, governmental public policies and market points of view into account. The Platform is a forum for articulation, convergence and networking.

New members and partners are constantly joining our platform, guaranteeing the flexibility and constant flow of competences needed to respond to dynamic challenges from technological, economic, political and social points of view.

Members and partners maintain the independence of their agendas and interests and, at the same time, have access to a vast and growing repository of knowledge and articulation.

In this way, the PNME provides the sector:



Promotion and induction to the market

Increased insertion of electric mobility in productive activities



Proposals of public policy and regulatory instruments

Building of research and development (R&D) skills

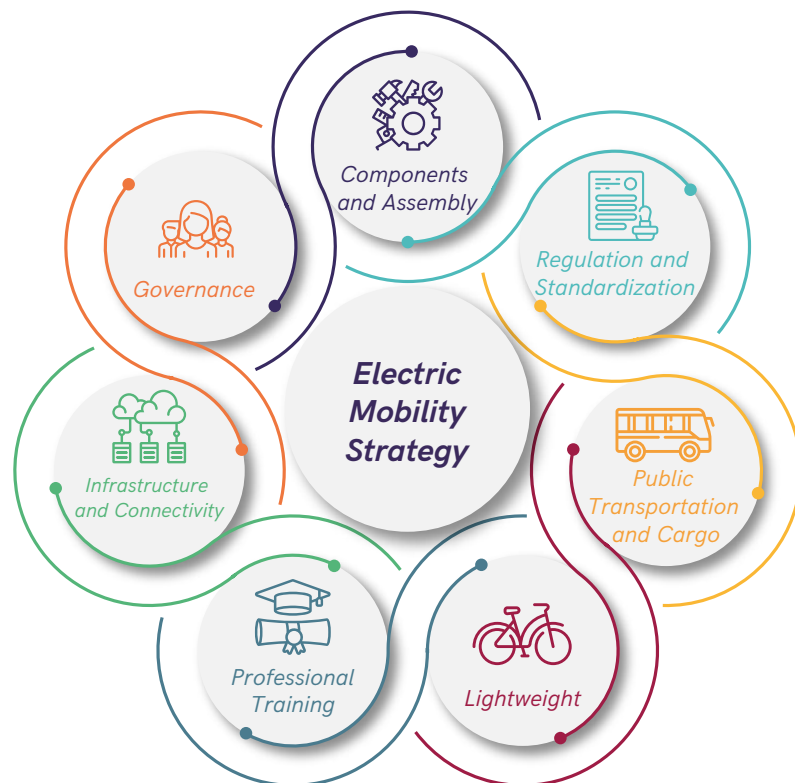


Electric Mobility Strategy

In 2020 and 2021, through virtual meetings, PNME members have discussed and worked to deliver the following products:

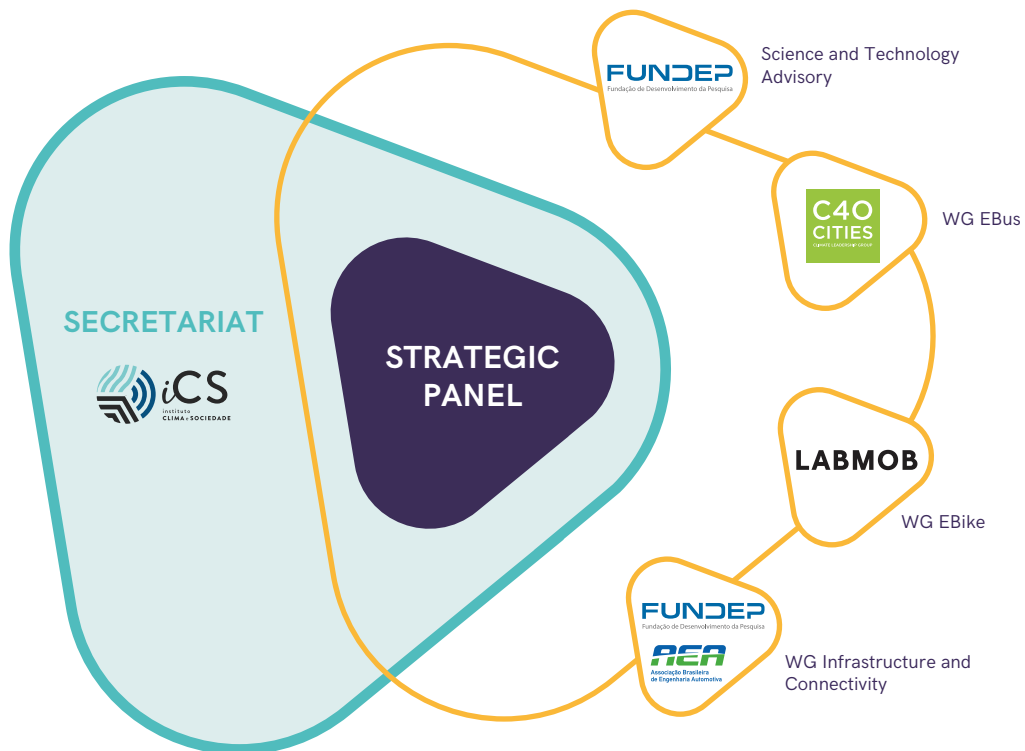
- Projects
- Electric Mobility Strategy
- Arguments in favor of Electric Mobility
- 1st Brazilian Electric Mobility Yearbook
- Brazilian Electric Mobility Radar
- 1st Conference of the PNME

The priorities of the efforts made by the Platform are laid out in its Electric Mobility Strategy. The Platform's Strategic Panel defined 7 strategic cluster areas that must be developed to promote electric mobility in Brazil: Governance, Components and Assembly, Regulation and Standardization, Public Transportation and Cargo, Lightweight, Infrastructure and Connectivity and Professional Training. To each cluster area, success factors and structural interventions were identified and are supported by PNME's working groups. Combined with constant monitoring and strong cooperation with relevant players in the sector, the Platform's Strategic Panel constantly updates the Strategy to guarantee its relevance.



How do we work?

In a flexible and strong structure, designed collaboratively by its members, the Platform currently consists of a Strategic Panel, a Science & Technology Advisory, three Working Groups and a Secretariat.



The Strategic Panel is responsible for the leadership and strategic planning of the platform, as well as the environment in which the demands of the sector and its members are discussed, prioritized and targeted to the proposal of viable solutions.

The Science and Technology Advisory gathers relevant names from electric mobility research in Brazil and provides technical advice, guaranteeing the alignment of PNME's Research and Development efforts.

STRATEGIC PANEL



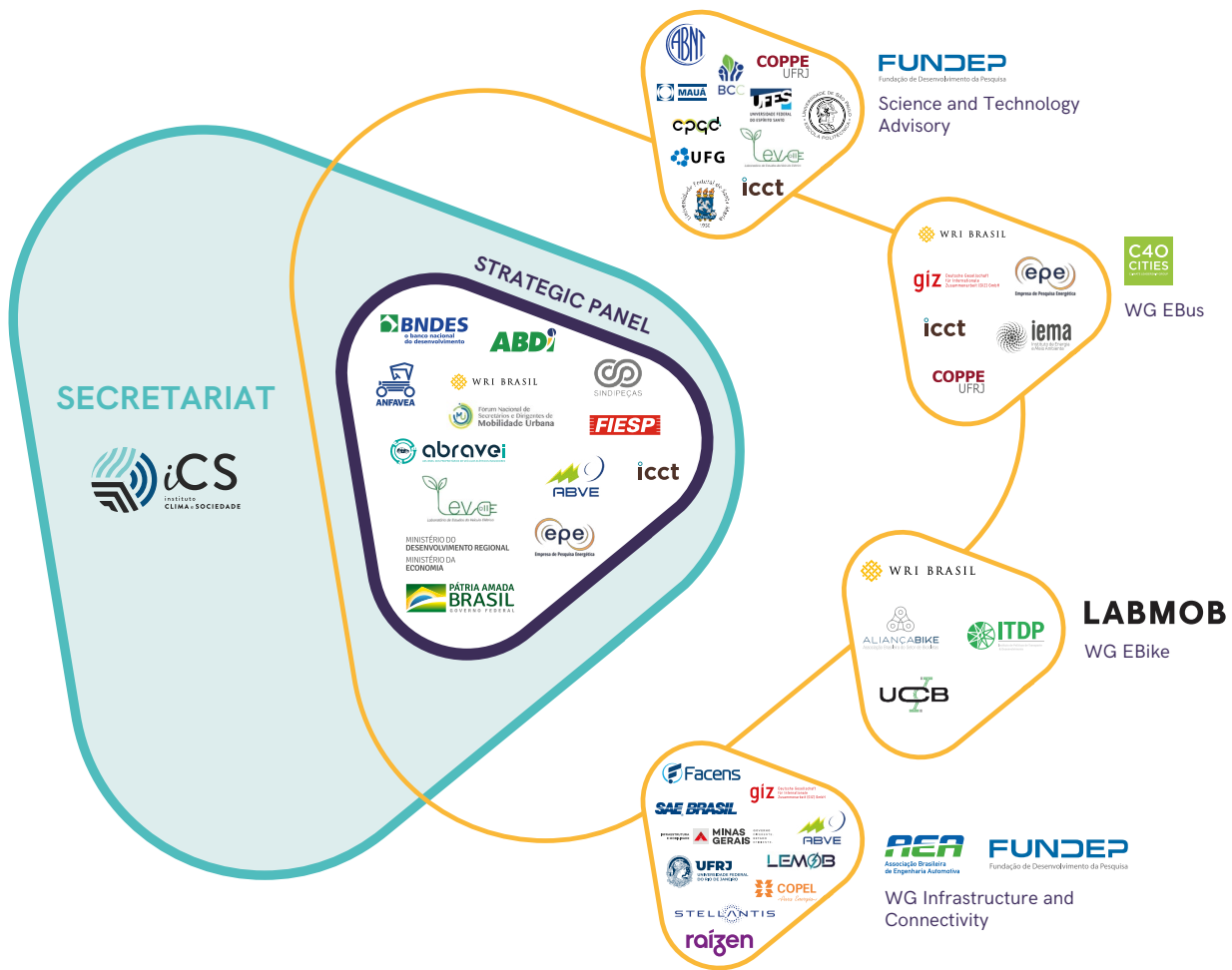
MINISTÉRIO DO
DESENVOLVIMENTO REGIONAL
MINISTÉRIO DA
ECONOMIA



The Platform also has three Working Groups currently dealing with: Bus Electrification (EBus), Electrical Bikes (EBike) and Infrastructure and Connectivity. By engaging relevant actors, WG members focus on more specific issues and aim to deliver products that contribute to the advance of the sector in Brazil.

PNME's coordination is made by iCS (Instituto Clima e Sociedade), a philanthropic organization that promotes prosperity, justice and low carbon development in Brazil.





The Platform also has several national and international partners that are engaged on collaborating with the objectives and mission of the PNME. Thus, PNME aims to be a space of articulation that congregates the key players of electric mobility, boosting these institutions in order to succeed in their work.

Research, projects and technological solutions promoted by the platform will help to impact upon decision makers in the construction of public policies for the sector. We work together for Brazil to fulfill its vocation to become a worldwide reference in Electric Mobility.

DO YOU WANT TO KNOW MORE?

www.pnme.org.br

contato@pnme.org.br

